



FRONT ELEVATION
1/4" = 1'-0"



RIGHT ELEVATION
1/4" = 1'-0"



LEFT ELEVATION
1/4" = 1'-0"



REAR ELEVATION
1/4" = 1'-0"

*Engineers seal does not include construction means, methods, techniques, sequences, procedures or safety precaution.
*Any deviations or discrepancies on plans are to be brought to the immediate attention of Engineer. Failure to do so will void Engineer's liability.
*Please review these documents carefully. Engineer will interpret that all dimensions, recommendations, etc. presented in these documents were deemed acceptable once construction begins.
*Any changes made without written consent of Engineer will void Engineer's liability.



LAT 34°
ENGINEERING, PLLC
FIRM LICENSE: P-1727
CAROLINA BEACH, NC 28428
919-757-3800
INFO@LAT34ENGINEERING.COM

CLIENT: **RICHARD WALLACE BUILDER**
1313 SEARAY LANE
CAROLINA BEACH, NC
DATE: _____

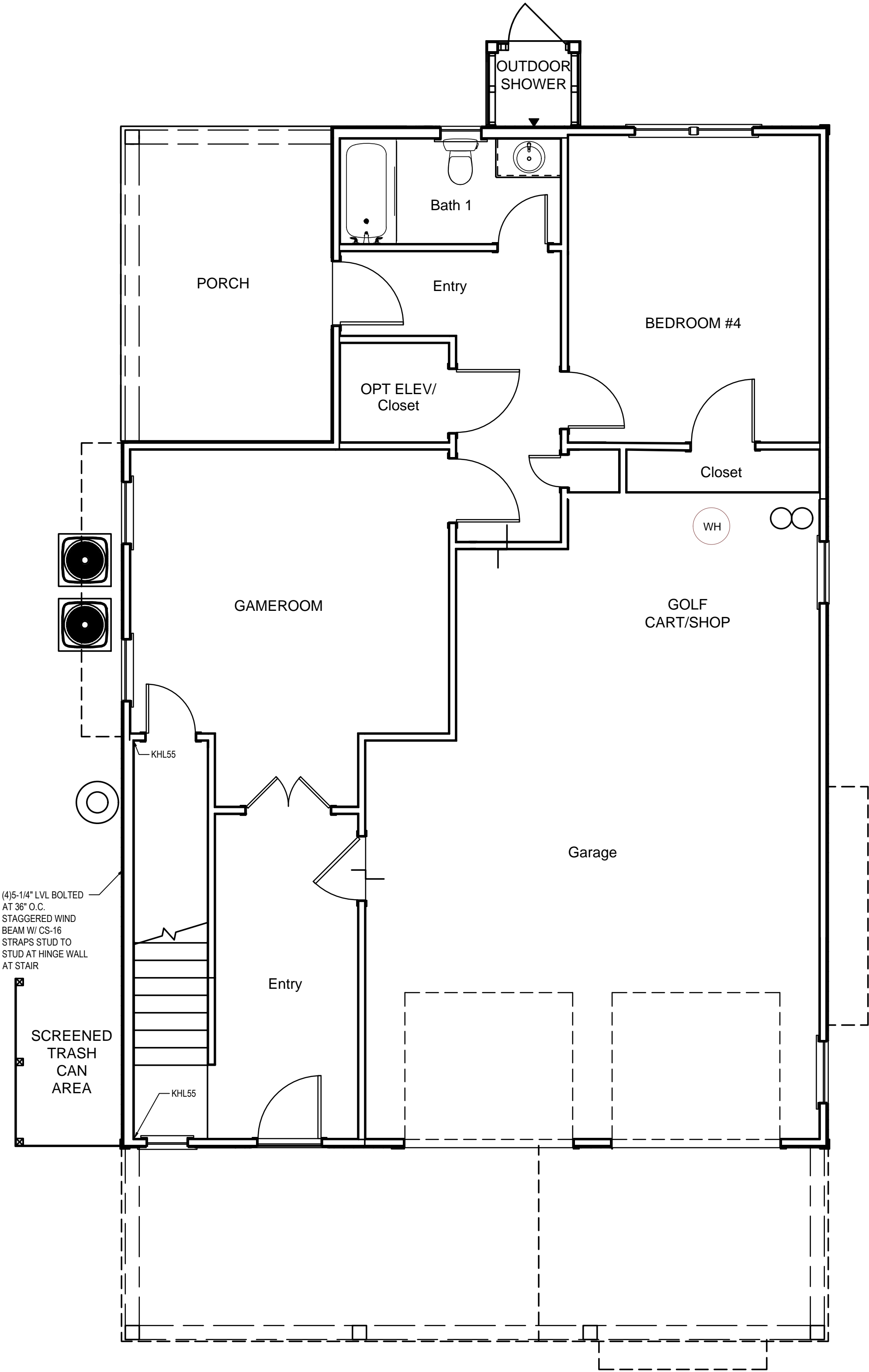
ELEVATIONS

Project #: 2022-014
Date: 2/28/2022
Drawn/Design By: CMP
DWG. Checked By: CMP
Scale: SEE PLAN

REVISIONS		
No.	Date:	Remarks
1	5/28/2019	
2	6/14/2019	
3		
4		

Sheet Number

1



PLAN SQ.FT.	
GROUND FLOOR	842 SQFT
FIRST FLOOR	1,663 SQFT
TOTAL CONDITIONED	2,505 SQFT
GARAGE/STOR.	632 SQFT
FRONT PORCH	183 SQFT
SCREEN PORCH	150 SQFT
BACK PORCH	150 SQFT

GROUND FLOOR PLAN
1/4" = 1'-0"

*Engineers seal does not include construction means, methods, techniques, sequences, procedures or safety precautions.
*Any deviations or discrepancies on plans are to be brought to the immediate attention of Engineer. Failure to do so will void Engineer's liability.
*Please review these documents carefully. Engineer will interpret that all dimensions, recommendations, etc. presented in these documents were deemed acceptable once construction begins.
*Any changes made without written consent of Engineer will void Engineer's liability.



LAT
34°
ENGINEERING, PLLC

FIRM LICENSE: P-1727
CAROLINA BEACH, NC 28428
919-757-2600
INFO@LAT34ENGINEERING.COM

Client:	RICHARD WALLACE BUILDER	
	1313 SEARAY LANE CAROLINA BEACH, NC	
Drawn:		

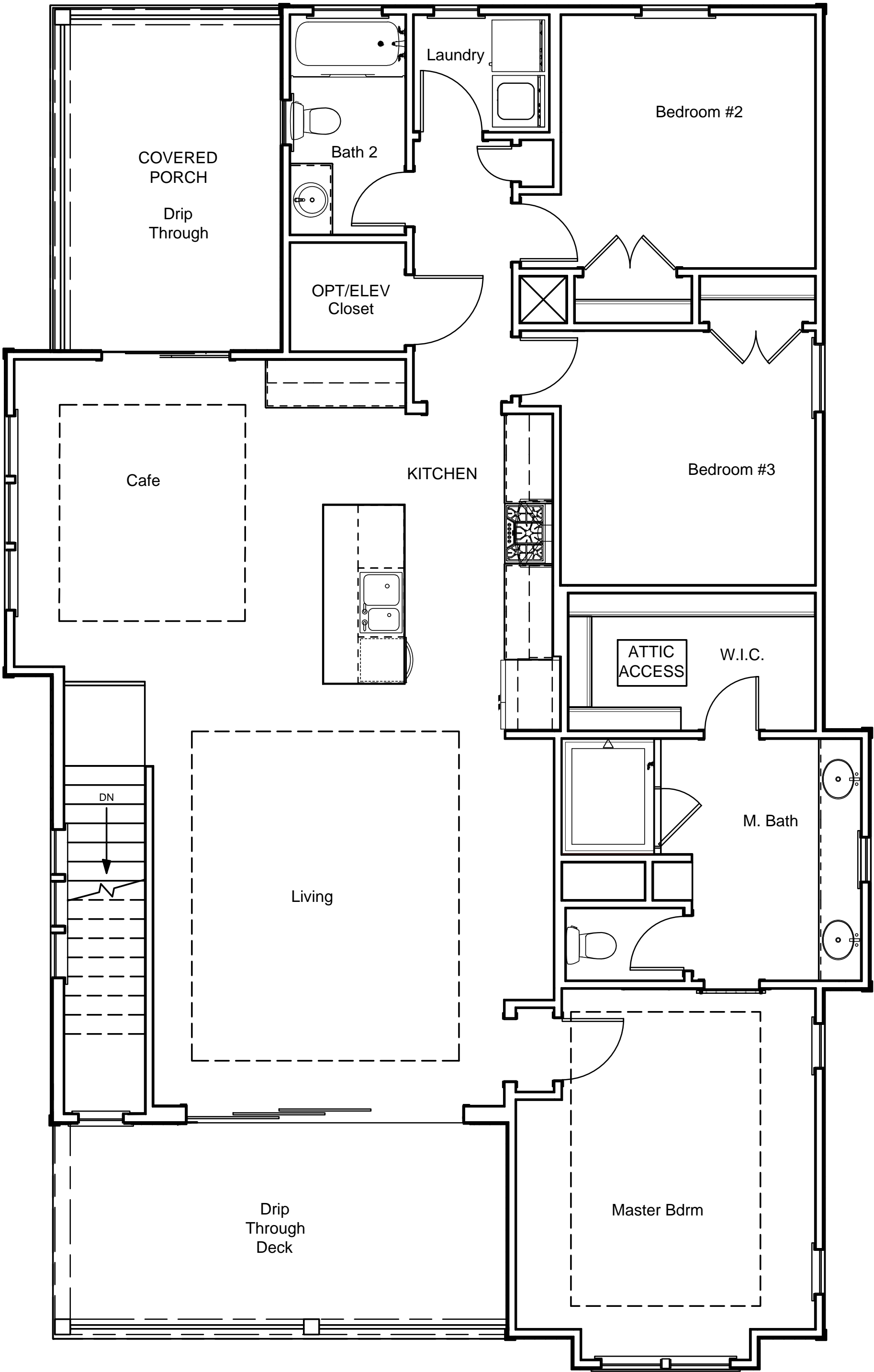
GROUND FLOOR
PLAN

Project #:	2022-014
Date:	2/28/2022
Drawn/Design By:	CMP
DWG. Checked By:	CMP
Scale:	SEE PLAN

REVISIONS		
No.	Date:	Remarks
△	5/28/2019	
△	6/14/2019	
△		
△		

Sheet Number

C:\Users\casin\Documents\Projects\2022-014 - RW SHOPPER 1313 SEARAY LANE\DWG\2022-014 - RW SHOPPER 1313 SEARAY LANE.dwg 2/28/2022 8:18 PM



FIRST FLOOR PLAN

1/4" = 1'-0"

*Engineers seal does not include construction means, methods, techniques, sequences, procedures or safety precautions.
*Any deviations or discrepancies on plans are to be brought to the immediate attention of Engineer. Failure to do so will void Engineer's liability.
*Please review these documents carefully. Engineer will interpret that all dimensions, recommendations, etc. presented in these documents were deemed acceptable once construction begins.
*Any changes made without written consent of Engineer will void Engineer's liability.



LAT
34°
ENGINEERING, PLLC

FIRM LICENSE: P-1727
CAROLINA BEACH, NC 28428
919-737-3800
INFO@LAT34ENGINEERING.COM

Client:	RICHARD WALLACE BUILDER	
	1313 SEARAY LANE CAROLINA BEACH, NC	

FIRST FLOOR PLAN

Project #:	2022-014
Date:	2/28/2022
Drawn/Design By:	CMP
DWG. Checked By:	CMP
Scale:	SEE PLAN

REVISIONS		
No.	Date:	Remarks
1	5/28/2019	
2	6/14/2019	
3		
4		

Sheet Number